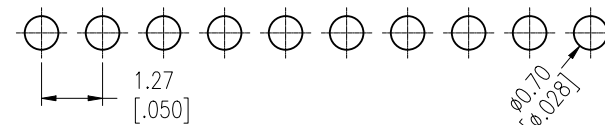
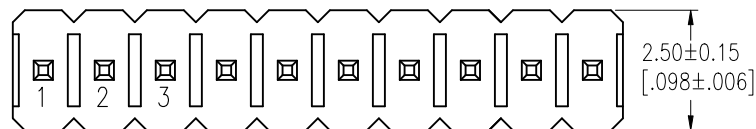


HSF

Recommended P.C.B Layout (Top Side)
(PCB BOARD TOLERANCE±0.05)

NOTES:
Rated Current:1.0AMP.
Contact Resistance:20mΩ Max.
Withstand Voltage:500V AC/DC
Insulation Resistance:1000MΩ Min.
Operation Temperature:-40°C to +105°C

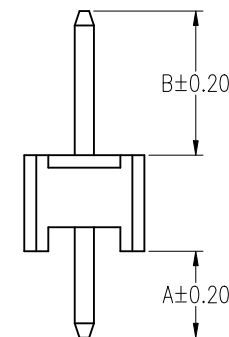
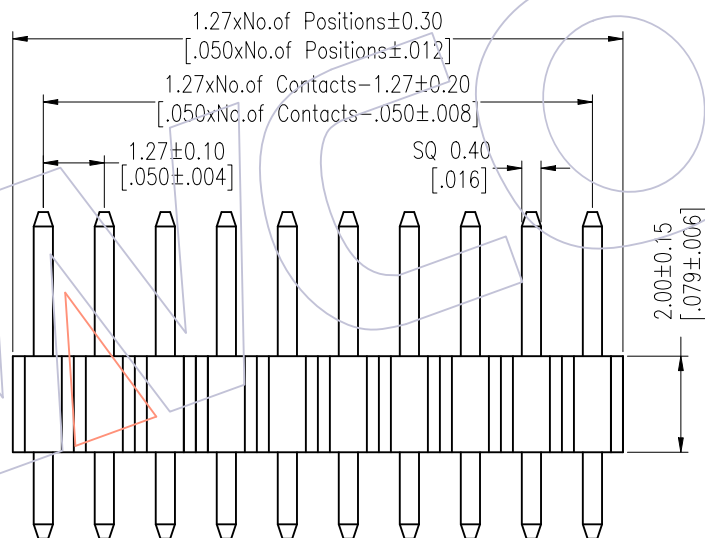


Contact Material:Brass
Contact Plating:Au or Sn Over Ni
Insulator Material:PA9T+33%G.F UL94V-0 BK

Ordering Information

1320-11 XX XX S XXX C A XX

No. of Pins	Contact Plating	Pin Length	Insulator	Packing	Series No.
01~50	G0=Gold Flash	L=A+B+2.0	C=PA9T	A=Tray	01~99
	G3=10u"Gold	Std:057=5.7			
	G4=15u"Gold	068=6.8			
	G5=30u"Gold	078=7.8			
	S0=Gold Flash/Tin				
	S3=10u"Gold/Tin				
	S4=15u"Gold/Tin				
	S5=30u"Gold/Tin				
	SN=Tin				
	SM=Matte Tin				



Item	Pin Length	A	B	Mating
Standard	5.7	1.80	1.90	2321
	6.8	1.80	3.00	2334
	7.8	1.80	4.00	2344
Alternate				

OPERATION	DRAW	DATE	SCALE	Fit	PART NO.
x.X ±0.40	William Chen	2018/01/17	UNIT	mm [inch]	1320-11XXXXSXXXCXXX
x.XX ±0.25	CHECK	DATE	SIZE	A4	TITLE:
x.XXX ±0.15	APPROVE	DATE	SHEET	1/1	1.27 Pin Header, SINGLE ROW, S/T, H=2.0
Angle ± 3'			PROJ.		Customer NO.
DIM TOL					

WCON
Http: www.wcon.com

WCON-Dongguan WCON-Kunshan
Tel: +86 769 85358920 Tel: +86 512 57468408
Fax: +86 769 85358915 Fax: +86 512 57468468
E-mail: sales@wcon.com E-mail: salesks@wcon.com