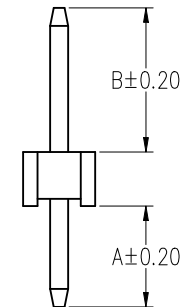
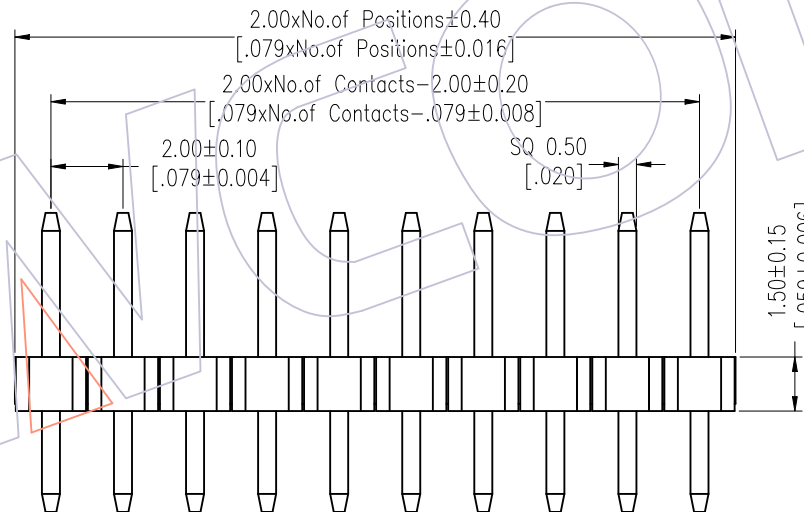
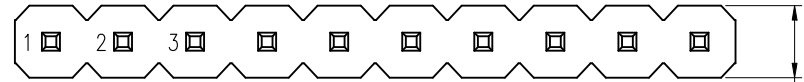
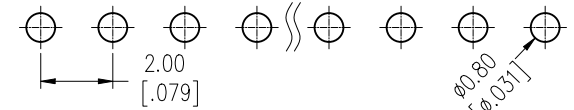


HSF

Recommended P.C.B Layout (Top Side)
(PCB BOARD TOLERANCE ±0.05)

NOTES:
 Rated Current: 2.0AMP.
 Contact Resistance: 20mΩ Max.
 Withstand Voltage: 500V AC/DC
 Insulation Resistance: 1000MΩ Min.
 Operation Temperature: -40°C to +125°C(GOLD) $\Delta 2$
 -40°C to +105°C(TIN) $\Delta 2$
 Contact Material: Brass
 Contact Plating: Au or Sn Over Ni
 Insulator Material: PA9T+33%G.F UL94V-0 BK



Ordering Information

1215-11 XX XX S XXX C 0 XX $\Delta 1$

No. of Pins	Contact Plating	Pin Length	Insulator Material	Packing	Series No.
02~40	G0=Gold Flash	L=A+B+1.5	0=PE Bag	0=PE Bag	01~99
	G3=10u"Gold	Standard:063=6.3	C=PA9T	T=Tube	
	G4=15u"Gold	073=7.3			
	G5=30u"Gold	083=8.3			
	S0=Gold Flash/Tin				
	S3=10u"Gold/Tin				
	S4=15u"Gold/Tin				
	S5=30u"Gold/Tin				
	SN=Tin				
	SM=Matte Tin				

Item	Pin Length	A	B	Mating
Standard	6.30	2.80	2.00	2220T 2221 2227T 2228
	7.30	2.80	3.00	2235
	8.30	2.80	4.00	2240 2243 2263 2272
	8.70	2.80	4.40	
	9.00	3.00	4.50	

REV	DATE	MODIFICATION DESCRIPTION	CHANGE	OPERATION	DRAW	DATE	SCALE	Fit	PART NO.
A3	2020/06/11	Modify Pin 02~40P	$\Delta 3$	Drawing	OPERATION	2020/06/11	UNIT	mm	1215-11XXXXSXXXCOXX $\Delta 1$
A2	2019/02/28	Modify	$\Delta 2$	Dwg	x.X ±0.40	CHECK	SIZE	A4	TITLE:
A1	2018/01/18	Modify P/N	$\Delta 1$	-----	x.XX ±0.25	DATE	SHEET	1/1	PH2.00 SINGLE ROW 180° H=1.5
A0	2012/04/18	NEW	-----	-----	x.XXX ±0.15	DATE	PROJ.		Customer NO.
				Angle ± 3°	± 3°	APPROVE			
				DIM	TOL				

WCON
 Http: www.wcon.com
 WCON-Dongguan Tel: +86 769 85358920
 WCON-Kunshan Tel: +86 512 57468408
 Fax: +86 769 85358915 Fax: +86 512 57468468
 E-mail: sales@wcon.com E-mail: salesks@wcon.com