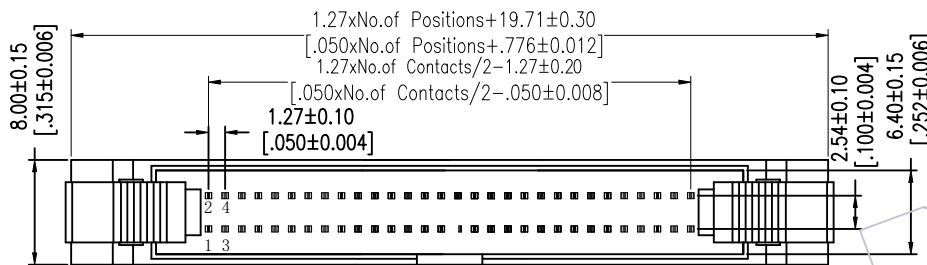


HSF

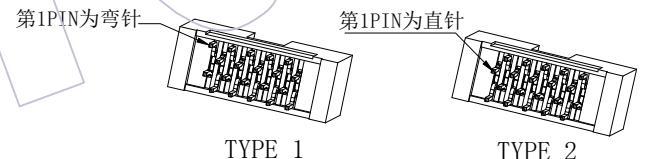
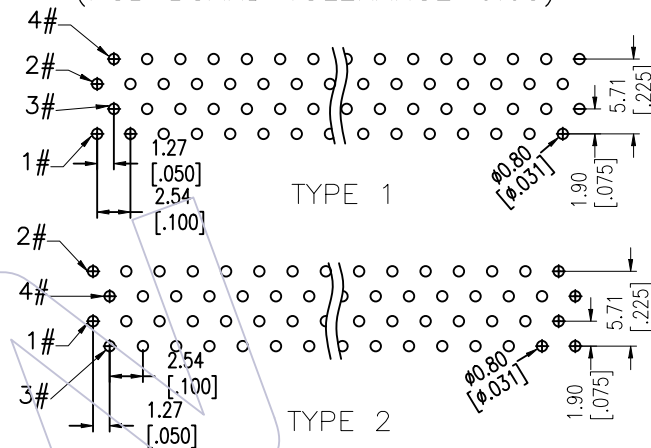
NOTES:

Current Rating: 1.0AMP
 Contact Resistance: 20mΩ Max
 Withstand Voltage: 500V AC/DC
 Insulation Resistance: 1000MΩ Min
 Operation Temperature: -40°C to +105°C

Contact Material: Brass
 Contact plating: Au Or Sn over Ni
 Insulator Material: PA9T+30%G.F UL94V-0



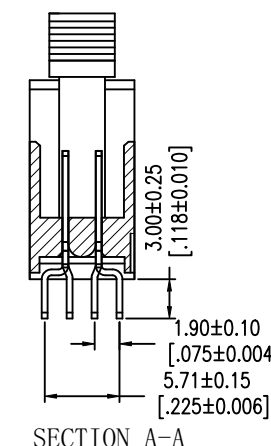
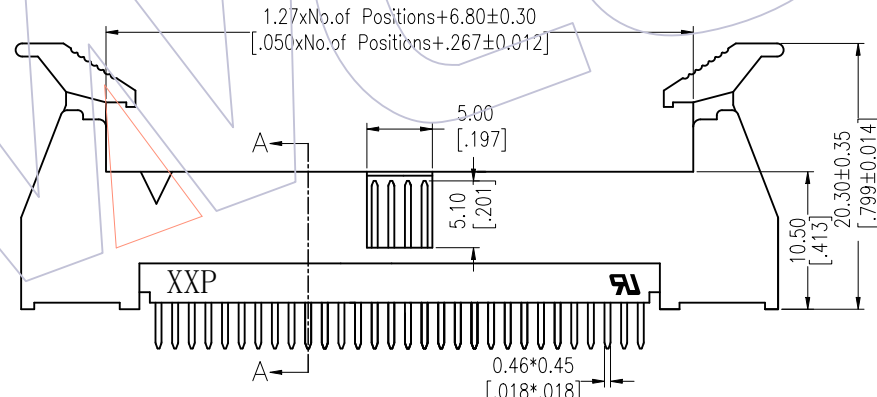
Recommended P.C.B Layout(Top Side)
 (PCB BOARD TOLERANCE±0.05)



Ordering Information

3241- XX S XX B S X X

No. of Pins	Contact Plating	Color Insulator	Packing	Series No.
10 30	G0=Gold Flash	B=Black	T=Tube	1=Type 1
12 32	G3=10u"Gold	U=Blue		2=Type 2
14 34	G4=15u"Gold	W=White		
16 40	G5=30u"Gold			
20 44	S0=Gold Flash/Tin			
24 50	S3=10u"Gold/Tin			
26 60	S4=15u"Gold/Tin			
64	S5=30u"Gold/Tin			
80	SN=Tin			
100				



Item	Pitch	Mating
Standard	1.27X2.54	5242
Alternate		

REV	DATE	MODIFICATION DESCRIPTION	CHANGE	OPERATION	DRAW	DATE	SCALE	FIT	PART NO.
				X.X ±0.40	JYHuang	2012/10/05	UNIT mm		3241-XXSXXBSXX
				X.XX ±0.25	CHECK	DATE	SIZE A4		TITLE: 1.27*2.54 EJECTOR HEADER 180° FOUR ROW
A0	2012/10/05	NEW	-----	X.XXX ±0.15	APPROVE	DATE	SHEET 1/1		Customer NO.
				Angle ± 3'			PROJ.		
				DIM TOL					

WCON

Http: www.wcon.com

WCON-Dongguan Tel: +86 769 85358920 Fax: +86 769 85358915 E-mail: sales@wcon.com

WCON-Kunshan Tel: +86 512 57468408 Fax: +86 512 57468468 E-mail: salesks@wcon.com