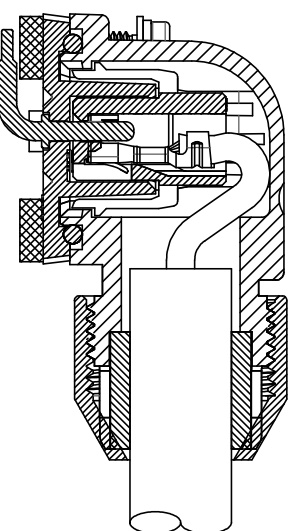
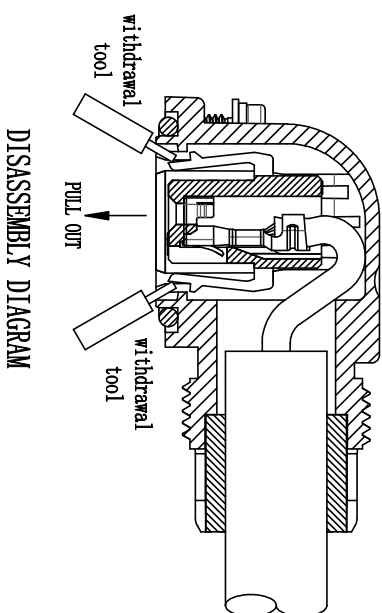


SPECIFICATION:

1. RATED CURRENT: 7A MAX(PER 1 POS);
2. VOLTAGE RATING: 200V AC(RMS) ;
3. CONTACT RESISTANCE:
INITIAL: 20MΩ MAX. FINAL: 30MΩ MAX;
4. WITHSTAND VOLTAGE: 1500V AC;
5. INSULATION RESISTANCE: 1000MΩ MIN;
6. OPERATION TEMPERATURE: -20℃ TO +30℃;
7. APPLICABLE WIRE:

- WIRE SIZE: AWG# 18~#20
INSULATION OUTER DIAMETER: φ1.3~1.8MM;
FINISH OUTER DIAMETER: φ5.3~6.5MM;
8. RECOMMENDED TIGHTENING TORQUE IS 0.2N·M;
 9. SCREWS AND GASKET SHALL NOT BE EASILY REMOVED;
 10. SOCKET INSULATOR OF WHICH DIRECTION TO HOOD IS REVERSED CAN BE ASSEMBLED ;
 11. ALL MATERIALS SHOULD BE COMPLIANT TO ROHS;
 12. WATERPROOF: IP67(WHEN MATED);



NO	DESCRIPTION	QTY	MATERIAL	REMARKS
7	密封螺母 (GLAND NUT)	1	PA66	BLACK
6	密封套管 (BUSHING)	1	SILICONE RUBBER	BLACK
5	母端子 (SOCKET CONTACT)	4	CT025	GOLD PLATING
4	塑胶主体 (SOCKET INSULATOR)	1	PBT	BLACK
3	外壳 (HOOD)	1	PA66	BLACK
2	M2螺丝 (SCREW)	4	STEEL	ZINC PLATING
1	防水圈 (WATER PROOF CIRCLE)	1	SILICONE RUBBER	BLACK

REV	DATE	MODIFICATION DESCRIPTION	CHANGE	OPERATION	DRAW	DATE	SCALE	FIT	PART NO.	TITLE:	WCON-Dongguan	WCON-Kunshan
0	2022.09.22	NEW		XX XX X.XXX	ANDY-XIE	2022.09.20	mm inch	mm inch	MJBE04P-32041801 (W)	3.2mm SERVO MOTOR 04 Series POWER PLUG HOOD Assembly	Tel: +86 769 85358920 Fax: +86 769 85358915 E-mail: sales@wcon.com	Tel: +86 512 57468408 Fax: +86 512 57468468 E-mail: sales@wcon.com
				Angle ± 3°	APPROVE	DATE	SHEET	2/2		Customer NO.	Http: www.wcon.com	

