

HSF

Recommended P.C.B Layout (Top Side) (PCB BOARD TOLERANCE±0.05)

NOTES:

- Current Rating: 0.5AMP
- Voltage Rating: 50V AC/DC
- Contact Resistance: 30mΩ max
- Withstand Voltage: 100V AC for 1minute
- Insulation Resistance: 500MΩ min
- Operation Temperature: -25°C to +105°C

Housing Material: PA9T(UL94V-0), NATURAL
 Contact Material: Copper alloy
 Contact plating: Au over Ni

Ordering Information

3622-P XXX - XXX XX X 01

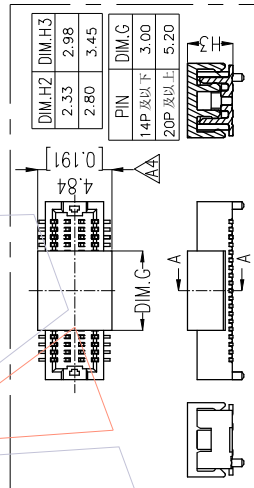
- No. of Pins: 14P, 20P, 24P, 30P, 32P, 36P, 40P
- Housing High: 023=2.30, 028=2.80, 033=3.30, 038=3.80, 043=4.30, 048=4.80
- Contact Plating: GI=3μ"Gold, G3=10μ"Gold, G4=15μ"Gold, G5=30μ"Gold
- T=Tube, p=Tube+CAP, R=Tape&Reel
- H5=30μ"Gold(Contact area, 3μ"Gold other area)

ASS'Y HEIGHT(K) PLUG(H2) SOCKET(H1)

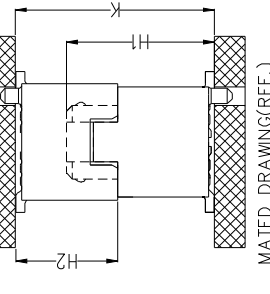
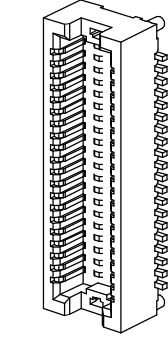
3.00	2.33	2.20
3.50	2.80	
4.00	2.80	
4.50	3.33	2.73
5.00	3.83	
5.50	4.33	
6.00	4.83	
6.50	3.33	
7.00	3.83	
7.50	4.33	4.80
8.00	4.83	

A5	2023/04/11	XSR	OPERATION	DRAW	DATE	SCALE	Fit	PART NO.
A4	2022/08/10	XSR	X.X ±0.40	XSR	2023/04/11	UNIT	mm	3622-PXXX-XXXXX01
A3	2021/07/31	XSR	X.XX ±0.25	CHECK	DATE	SIZE	A4	TITLE:
A0	2018/02/01	NEW	X.XXX ±0.15	APPROVE	DATE	SHEET	1/1	0.50mm BTB MALE SMT TYPE W/O LATCH
REV	DATE	MODIFICATION	DESCRIPTION	CHANGE	DATE	PROJ.	Customer NO.	

WITH CAP SCALE 1/2



DIM.H2	DIM.H3
2.33	2.98
2.80	3.45
PIN	DIM.G
14P 及以下	3.00
20P 及以上	5.20



SEC A-A

MATED DRAWING(REF.)

CAP	PART NO.	DIM.H2	DIM.W
WITH	3622-PXXX-023XXX01	2.33	
	3622-PXXX-028XXX01	2.80	
	3622-PXXX-033XXX01	3.33	4.60
	3622-PXXX-038XXX01	3.83	
W/O	3622-PXXX-043XXX01	4.33	
	3622-PXXX-048XXX01	4.83	

PIN	DIMA	DIMB	DIMC	DIMD
14	5.60	3.00	5.10	4.20
20	7.10	4.50	6.60	5.70
24	8.10	5.50	7.60	6.70
30	9.60	7.00	9.10	8.20
32	10.10	7.50	9.60	8.70
36	11.10	8.50	10.60	9.70
40	12.10	9.50	11.60	10.70
50	14.60	12.00	14.10	13.20
60	17.10	14.50	16.60	15.70
70	19.60	17.00	19.10	18.20
80	22.10	19.50	21.60	20.70
90	24.60	22.00	24.10	23.20
100	27.10	24.50	26.60	25.70

WCON

Http: www.wcon.com

WCON-Dongguan
 WCON-Kunshan
 Tel: +86 769 85358920
 Tel: +86 512 57468408
 Fax: +86 769 85358915
 Fax: +86 512 57468488
 E-mail: sales@wcon.com
 E-mail: sales@wcon.com

10
9
8
7
6
5
4
3
2
1

10
9
8
7
6
5
4
3
2
1